



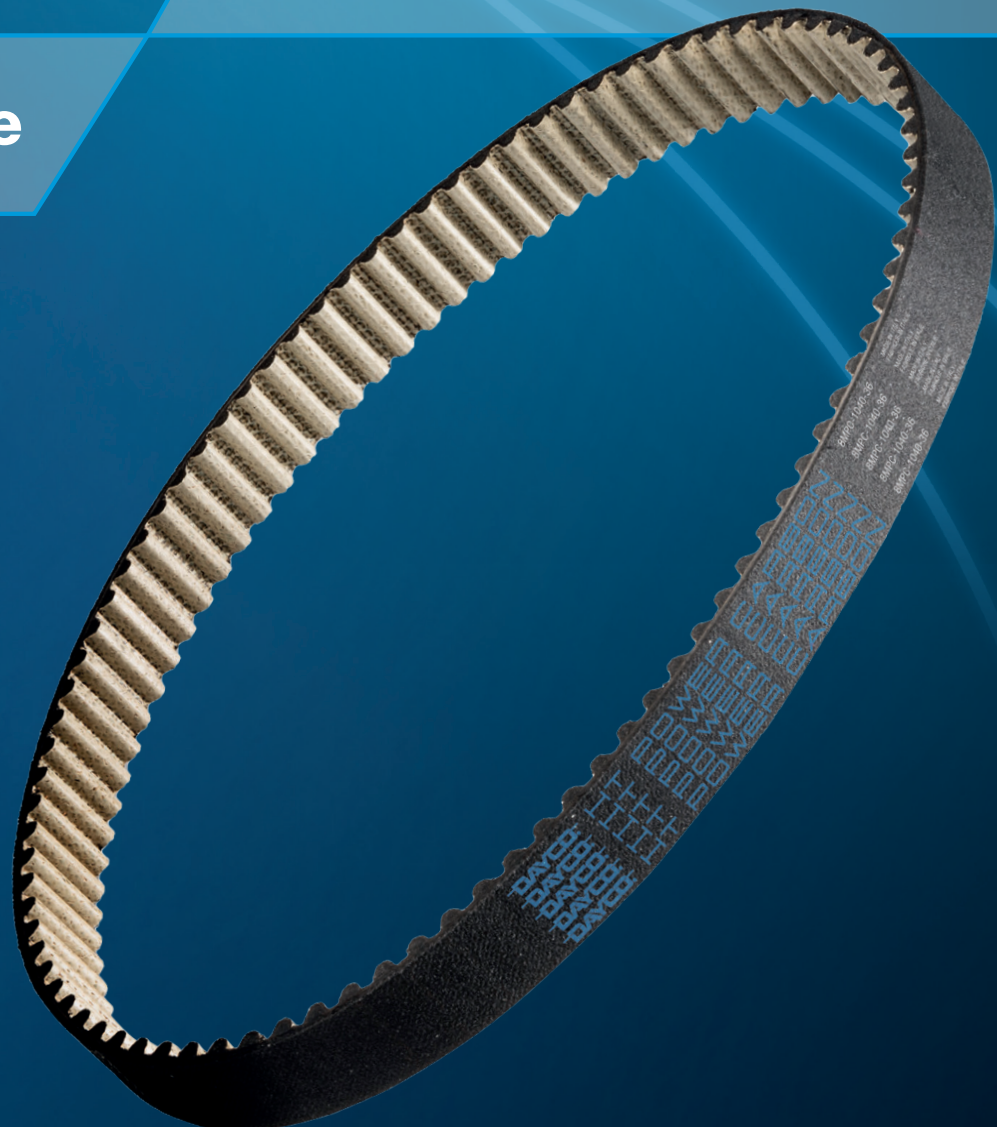
MOVE FORWARD. ALWAYS.™

Dayco HT POWER CARBON

A Line of Premium Synchronous Belts
Offering the Best in Shock Load and
Temperature Resistance

HT POWER CARBON

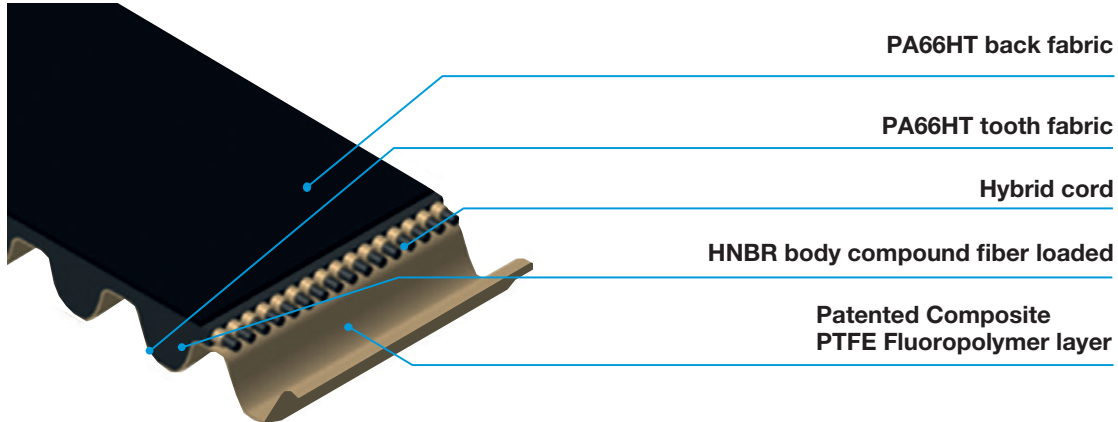
Product Guide





MOVE FORWARD. ALWAYS.™

HT POWER Carbon Synchronous Belts



Designed for applications requiring very high load capability, high precision meshing, high speed variances and critical operational safety

The Dayco HT Power Carbon synchronous belt has a hybrid cord made from a combination of glass for high chemical compatibility with HNBR compound, carbon fibers for high mechanical resistance of the belt and high precision meshing of teeth into the pulley grooves. The polymer compounds used in the belt are combined with aramid chopped fibers to offer improved stiffness and designed to provide extreme resistance to mechanical stress, elevated temperatures and aggressive fluids and chemicals. With excellent dimensional stability, strength and flexibility, along with low noise and low friction, it is meant for high load performances, offering the best in shock load and temperature resistance.

Features:

- HNBR rubber polymer mixed with aramid fibers provides extreme resistance to mechanical stresses and aggressive fluids
- Offers the highest temperature resistance, -22°F (-30°C) to 266°F (130°C)
- Engineered and patented with the best tooth fabric, combining PTFE with HT nylon, to reduce friction, noise and wear
- Belt structure manufactured with the best combination of advanced and innovative materials for extreme conditions
- Belt dimensions designed according to ISO 13050

Applications:

- Roller chain replacement (high torque-slow speed applications)
- CNC machines (medium torque-high speed applications)
- Material handling equipment in aggregate, food processing, pulp and paper, wood processing, distribution, intralogistics, and agricultural applications
- Air moving equipment
- Pumps
- High performance vehicles
- Motorcycle final drives
- E-bike motors
- E-scooter final drive
- V-belt conversion
- Micro mobility applications

Part No. Description: 8MPC-1040-36

8M: Metric pitch (8mm)

PC: Power Carbon

1040: Pitch length in mm

36: Width in mm*

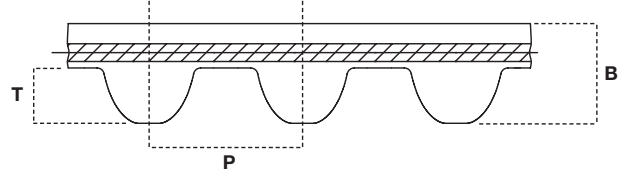
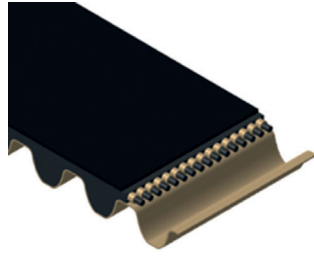
*For cut belts standard widths see chart below:

	Standard Widths (mm)
G 8M	12
	21
	36
	62



MOVE FORWARD. ALWAYS.™

HT Power Carbon - Sleeves Size List



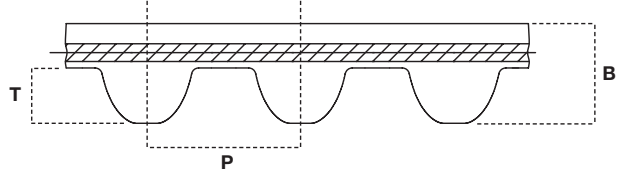
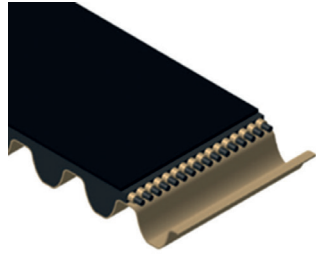
Metric			
Tooth Profile	P - Pitch (mm)	T - Tooth Height (mm)	B - Belt Height (mm)
G 8M	8	3.4	5.6

Reference Code	DAYCO Part No.	Tooth Profile	Teeth Number	Lp Pitch Length (mm)	Sleeve Nominal Width (mm)	Sleeve Nominal Weight (kg)	Sleeve Nominal Weight (lb)
8MPC-720	8MPC-720-470	G 8M	90	720	470	3,60	7,92
8MPC-800	8MPC-800-470	G 8M	100	800	470	4,00	8,80
8MPC-896	8MPC-896-470	G 8M	112	896	470	4,48	9,86
8MPC-960	8MPC-960-470	G 8M	120	960	470	4,80	10,56
8MPC-1000	8MPC-1000-470	G 8M	125	1000	470	5,00	11,00
8MPC-1040	8MPC-1040-470	G 8M	130	1040	470	5,20	11,44
8MPC-1120	8MPC-1120-470	G 8M	140	1120	470	5,60	12,32
8MPC-1200	8MPC-1200-470	G 8M	150	1200	470	6,00	13,20
8MPC-1280	8MPC-1280-470	G 8M	160	1280	470	6,40	14,08
8MPC-1440	8MPC-1440-470	G 8M	180	1440	470	7,20	15,84
8MPC-1600	8MPC-1600-470	G 8M	200	1600	470	8,00	17,60
8MPC-1672	8MPC-1672-470	G 8M	209	1672	470	8,36	18,39
8MPC-1792	8MPC-1792-470	G 8M	224	1792	470	8,96	19,71
8MPC-2000	8MPC-2000-470	G 8M	250	2000	470	10,00	22,00



MOVE FORWARD. ALWAYS.™

HT Power Carbon - Belts Size List



Metric			
Tooth Profile	P - Pitch (mm)	T - Tooth Height (mm)	B - Belt Height (mm)
G 8M	8	3.4	5.6

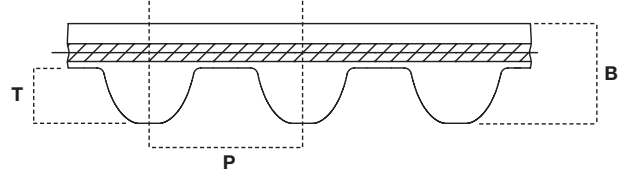
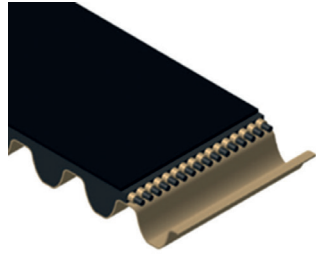
Other widths available on request

DAYCO Part No.	Tooth Profile	Teeth Number	Lp Pitch Length (mm)	Belt Width (mm)	Belt Weight (kg)	Belt Weight (lb)
8MPC-720-12	G 8M	90	720	12	0,04	0,10
8MPC-800-12	G 8M	100	800	12	0,05	0,11
8MPC-896-12	G 8M	112	896	12	0,05	0,12
8MPC-960-12	G 8M	120	960	12	0,06	0,13
8MPC-1000-12	G 8M	125	1000	12	0,06	0,13
8MPC-1040-12	G 8M	130	1040	12	0,06	0,14
8MPC-1120-12	G 8M	140	1120	12	0,07	0,15
8MPC-1200-12	G 8M	150	1200	12	0,07	0,16
8MPC-1280-12	G 8M	160	1280	12	0,08	0,17
8MPC-1440-12	G 8M	180	1440	12	0,09	0,19
8MPC-1600-12	G 8M	200	1600	12	0,10	0,21
8MPC-1672-12	G 8M	209	1672	12	0,10	0,22
8MPC-1792-12	G 8M	224	1792	12	0,11	0,24
8MPC-2000-12	G 8M	250	2000	12	0,12	0,26
8MPC-720-21	G 8M	90	720	21	0,08	0,17
8MPC-800-21	G 8M	100	800	21	0,08	0,18
8MPC-896-21	G 8M	112	896	21	0,09	0,21
8MPC-960-21	G 8M	120	960	21	0,10	0,22
8MPC-1000-21	G 8M	125	1000	21	0,11	0,23
8MPC-1040-21	G 8M	130	1040	21	0,11	0,24
8MPC-1120-21	G 8M	140	1120	21	0,12	0,26
8MPC-1200-21	G 8M	150	1200	21	0,13	0,28
8MPC-1280-21	G 8M	160	1280	21	0,13	0,30
8MPC-1440-21	G 8M	180	1440	21	0,15	0,33
8MPC-1600-21	G 8M	200	1600	21	0,17	0,37
8MPC-1672-21	G 8M	209	1672	21	0,18	0,39
8MPC-1792-21	G 8M	224	1792	21	0,19	0,41
8MPC-2000-21	G 8M	250	2000	21	0,21	0,46
8MPC-720-36	G 8M	90	720	36	0,13	0,29
8MPC-800-36	G 8M	100	800	36	0,14	0,32



MOVE FORWARD. ALWAYS.™

HT Power Carbon - Belts Size List



Metric			
Tooth Profile	P - Pitch (mm)	T - Tooth Height (mm)	B - Belt Height (mm)
G 8M	8	3.4	5.6

Other widths available on request

DAYCO Part No.	Tooth Profile	Teeth Number	Lp Pitch Length (mm)	Belt Width (mm)	Belt Weight (kg)	Belt Weight (lb)
8MPC-896-36	G 8M	112	896	36	0,16	0,35
8MPC-960-36	G 8M	120	960	36	0,17	0,38
8MPC-1000-36	G 8M	125	1000	36	0,18	0,40
8MPC-1040-36	G 8M	130	1040	36	0,19	0,41
8MPC-1120-36	G 8M	140	1120	36	0,20	0,44
8MPC-1200-36	G 8M	150	1200	36	0,22	0,48
8MPC-1280-36	G 8M	160	1280	36	0,23	0,51
8MPC-1440-36	G 8M	180	1440	36	0,26	0,57
8MPC-1600-36	G 8M	200	1600	36	0,29	0,63
8MPC-1672-36	G 8M	209	1672	36	0,30	0,66
8MPC-1792-36	G 8M	224	1792	36	0,32	0,71
8MPC-2000-36	G 8M	250	2000	36	0,36	0,79
8MPC-720-62	G 8M	90	720	62	0,22	0,49
8MPC-800-62	G 8M	100	800	62	0,25	0,55
8MPC-896-62	G 8M	112	896	62	0,28	0,61
8MPC-960-62	G 8M	120	960	62	0,30	0,65
8MPC-1000-62	G 8M	125	1000	62	0,31	0,68
8MPC-1040-62	G 8M	130	1040	62	0,32	0,71
8MPC-1120-62	G 8M	140	1120	62	0,35	0,76
8MPC-1200-62	G 8M	150	1200	62	0,37	0,82
8MPC-1280-62	G 8M	160	1280	62	0,40	0,87
8MPC-1440-62	G 8M	180	1440	62	0,45	0,98
8MPC-1600-62	G 8M	200	1600	62	0,50	1,09
8MPC-1672-62	G 8M	209	1672	62	0,52	1,14
8MPC-1792-62	G 8M	224	1792	62	0,56	1,22
8MPC-2000-62	G 8M	250	2000	62	0,62	1,36



PRODUCTS STORAGE-HANDLING CONDITIONS

- If possible, store in a cool, dry environment with no direct sunlight
- Ideal temperature for storage conditions is below 86°F (30°C)
- Avoid moisture, solvents or chemical contamination
- Continuous exposure to high temperatures such as 122°F (50°C) might significantly reduce belt life
- Humidity is not significantly causing issues
- If properly stored, belt shelf life is at least 5 years

na.daycoaftermarket.com

DAYCO[®]

MOVE FORWARD. ALWAYS.[™]