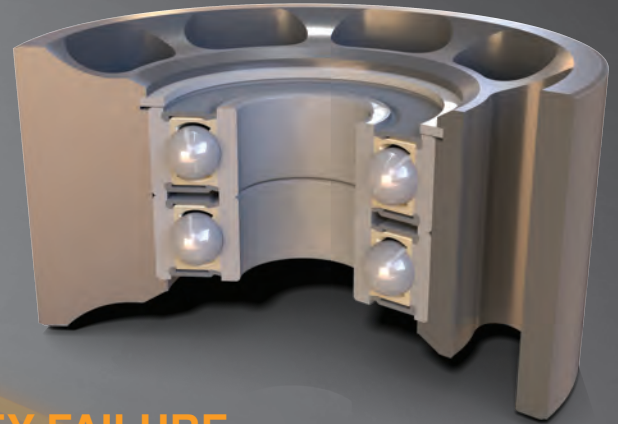



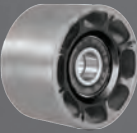


HEAVY DUTY IDLER/TENSIONER PULLEY

The performance demands of OEM of over-the-road trucking and off-road equipment requires a built for punishment heavy duty constructed pulley. Designed to replace idler and tensioner pulleys for serpentine drives in heavy diesel engine applications, Dayco® Heavy Duty pulleys are manufactured from steel, powdered metal, or engineered polymer materials to resist wear under harsh environments. Each heavy duty pulley from Dayco features dual permanently lubricated sealed bearings and retainers to provide long life despite the shock loads experienced in diesel engine applications.



TROUBLESHOOTING HEAVY DUTY PULLEY FAILURE

Noisy, Seized/Locked, or Discoloration of Pulley	Inspect for bearing failure	
Pulley Surface Buildup	Inspect for environmental contaminants	
Excessive Pulley Surface Wear	Excessive mileage, improper tension, or environmental contaminants	
Pulley Purging Grease	Inspect for leaking bearing seal or environmental contaminants	
Tensioner and Pulley Misalignment	Improper system alignment, excessive vibration resulting in loose mounting bolt; inspect for cracked or broken ribs or tensioner pivot tube wear	